



Ultra Lightweight Rectangle Full Rim TR 90 Frame Unisex D227

Our Product Introduction

for more products please visit us on sanvisionoptic.com

Basic Information

- Place of Origin: China
- Brand Name: Kraink
- Model Number: D227
- Minimum Order Quantity: 10 pairs
- Price: CONSULT
- Packaging Details: A box of 15 pairs
- Delivery Time: 5-8 work days
- Payment Terms: L/C, T/T, Western Union
- Supply Ability: Spot Inventory

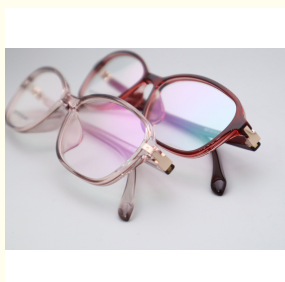


Product Specification

- Weight: 12.6G
- Gender: Unisex
- Frame Color: Various Colors Available
- Model: D227
- Size: 52-15-140
- Frame Type: Full Rim
- Frame Shape: Rectangle
- Frame Material: TR
- Temple Length: Adjustable
- Style: Classic Vintage
- Highlight: tr90 material frames,
tr90 material glasses frame,
ultra-light tr90 frame



More Images



Product Description

Ultra Lightweight Rectangle Full Rim TR 90 Frame Unisex Model D227

Product Description:

The D227 TR 90 frame is available in a range of colors, so you can choose the one that best suits your personal style. Whether you want to stand out with a bold and bright color or prefer a more subtle and understated look, there is a color to suit everyone.

One of the standout features of this TR 90 frame is its durability. Made from high-quality materials, the frame is built to last and can withstand daily wear and tear. The full rim design provides additional protection for the lenses, ensuring they remain scratch-free and in perfect condition.

Overall, the D227 TR 90 frame is the perfect choice for anyone looking for a stylish, lightweight, and durable eyewear solution.



Features:

Product mode	D227
standard	All the stand all over the world we can do
MOG	1PCS
sample	Available
sample charge	which will refunded from the first mass order
sample lead time	15-30 days
production time	7 days for ready frame 15 days for ODM ; 90 days for OEM orders.

Company Information:

SANVISION OPTICAL Trading co. ,Ltd. is focusing on Optical frames and lenes manufacturer and trader .We have 15 years rich experience for seamless production and exporting .Our factory is located in Shenzhen and Jiangsu and products are exported to many countries , Asia , Middle East , Europe and United States and other countries .Besides,we also provide OEM and ODM services and accept custom logo , package , label as well .We have a lot of hot sales and new styles in our website ,Welcome to visit ! If you are interested in any of our products or would like to discuss a custom order, please feel free to contact us.

广州圣视光学有限公司

SANVISION OPTIC



Packing and Shipping:

Product Packaging:

1. One kids eyeglasses and one pp bag
2. A box of 15 pairs

Shipping:

1. 5-7 working days to output
2. Please contact us for shipping methods and shipping costs

FAQ:

Q: What is the brand name of this product?

A: The brand name of this product is Kraink.

Q: What is the model number of this product?

A: The model number of this product is D227.

Q: Where is this product manufactured?

A: This product is manufactured in China.

Q: Is the frame made of TR material?

A: Yes, the frame of this product is made of TR material.

Q: Is this product available in different colors?

A: Yes, this product is available in a variety of colors.



Guangzhou Sheng Shi Optical Trading Co., Ltd.



18825098955



sanvision@163.com



sanvisionoptic.com

3rd Floor, No. 270, Renmin Middle Road, Yuexiu District, Guangzhou